

# Promethion Live Software Platform

## Real-Time Monitoring & Visualization of Metabolic and Behavioral Studies

The innovative Promethion Live software platform allows you to easily set up your metabolic and behavioral studies for data acquisition, real-time study monitoring with cohort analysis, graphical visualization of results, error detection, and data export. Study data is always available for monitoring system performance, animal welfare and data quality—allowing for early error identification and modification. Promethion Live even lets you enter animal specific information, providing visualization of cohort specific data for any time interval including mean, median and standard deviation. The software is easy to use with re-usable templates and configurations, as well as one-click calibration. Data export can be set up for any time range within the study and output in CSV data or SVG graphic formats. All raw and calculated study data is recorded for transparency and traceability.



Promethion Live software provides control and recording of Promethion/Promethion Core components and peripheral devices, including:

- Flow Generators
- Gas Analyzers
- Cage Sensors
- Environmental Sensors
- Group-Housed Caging Systems
- Stable Isotope Analyzer



## FEATURES

Live access to study and animal information to allow real-time decision making

Intuitive setup screen simplifies input of all cage and device parameters, including animal specific information

Access to fully transparent and traceable raw data, for evaluation and reanalysis if needed

Continuous monitoring of system performance, animal welfare and data quality

Flexible real-time analysis and visualization of grouped data

System and experiment configuration templates simplify study setup while enhancing consistency and quality control

One-click calibration reduces calibration time

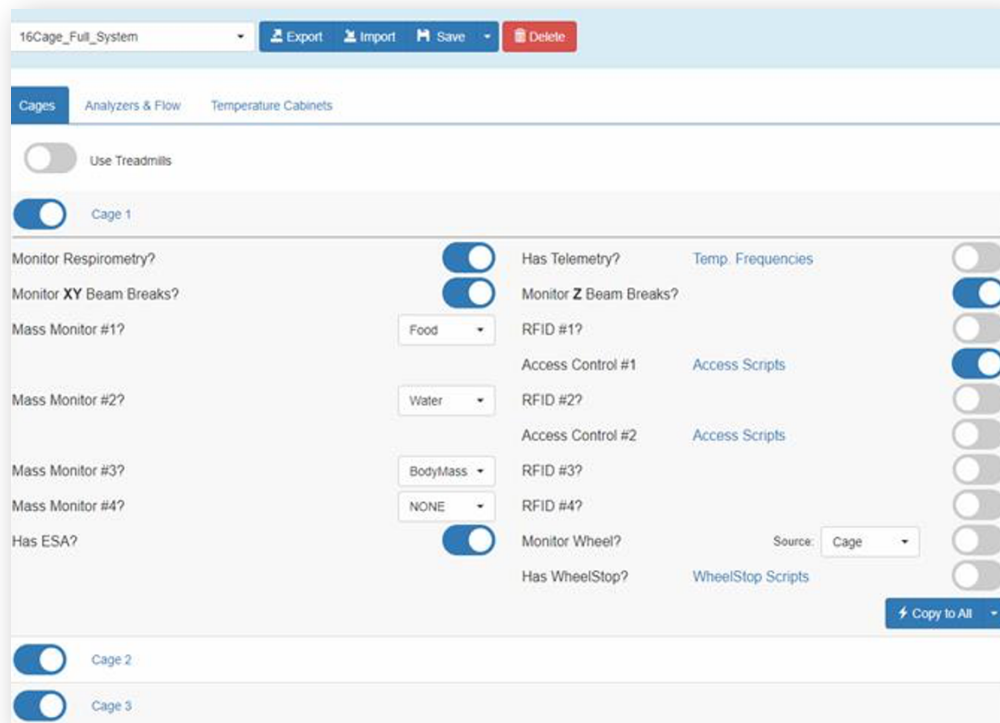
Data export to CSV files or SVG graphs for simplified analysis and presentation of study results

Secure remote access from any device – access data whenever and wherever you want

# Promethion Live Software Platform

## Set Up and Start an Experiment Within Minutes

The intuitive user interface allows fast setup of your study. Configurations can be stored and re-used, further saving time. New configurations can quickly be built by modifying existing ones. The software even includes one-button calibration.



## Evaluate System Status at a Glance

A possible concern has been detected on your system. Please review the items below.

- FoodA\_1 value is unchanging
- Water\_1 value is unchanging
- BodyMass\_1 value is unchanging

Parameter	Description
State	HARVESTING_DATA
Action	Reading from cage(s) 7 and 15
Is Recording	YES
Last Sample	2020-12-28 10:45:42

1

Promethion Live Software continually monitors all cages and informs the user when a parameter is outside an acceptable range. This allows real-time error identification and handling during an experiment. With the remote access capability, monitoring can be done from virtually anywhere 24 hours a day.

System Status

Gas Analyzer(s)

Analyzer A

O2	19.800%
CO2	0.1156%
WVP	1.786 kPa
BP	97.907 kPa
AnTemp	36.86 C
SubFlow	251.389 ml/min
H2	0 ppb
VOC	38 ppb

Flows

Cages 1

ESA

2

The System Status screen uses color coding to highlight the source of potential system errors.

Clicking on the error source provides specific details, such as cage components. The system can even identify when food and water containers need refilling.

3

Cages 1

	Food	Water	BodyMass
Cage 1	Error	Error	Error
	Access@1	Open	
	XBreaks	Error	
	YBreaks	Error	
	ZBreaks	Error	
Cage 2	330.918g	248.509g	176.233g
Cage 3	306.630g	255.885g	172.829g
Cage 4	314.940g	254.593g	172.456g
Cage 5	316.210g	234.814g	174.565g
Cage 6	318.703g	250.341g	171.959g
Cage 7	318.339g	260.303g	176.075g
Cage 8	331.470g	277.875g	171.076g

ESA

# Promethion Live Software Platform

## Monitor Animal Welfare 24/7

Promethion Live software provides viewing of individual animal data, providing caretakers with “at-a-glance” verification of drinking, eating and activity. These individualized views can be for any parameter measured.

Any data from the system can be pulled into a template and saved for use by any caretaker.

Configure Realtime Display

Grouping Source: Manual

Grouping: CTRL: 6,10,12,16  
EXP: 5,9,11,15  
Enter one group per line, in the format of A:1-4,9-12, where A is the group label and the cage numbers are in a comma separated list or hyphen separated range.

Bin Size: 60

Start Date: 2020/10/27 10:43

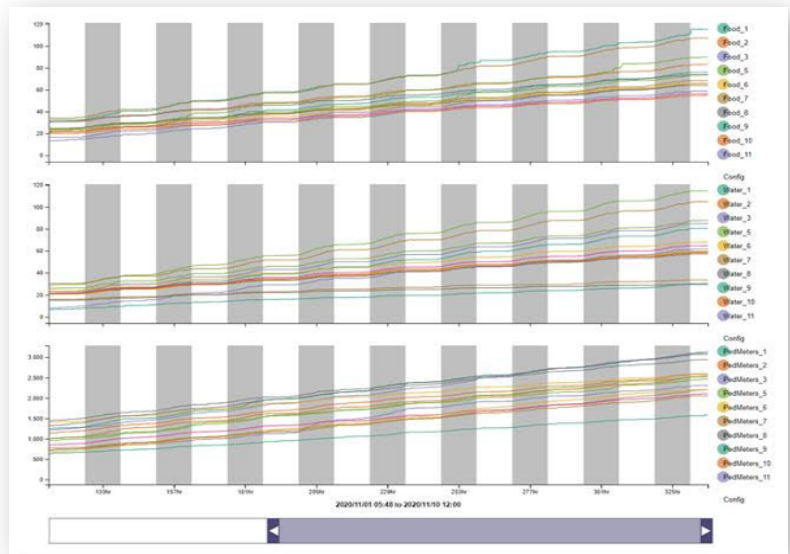
End Date: 2020/11/10 12:01

Date Format: Relative

Time Origin: 2020/10/27 10:43

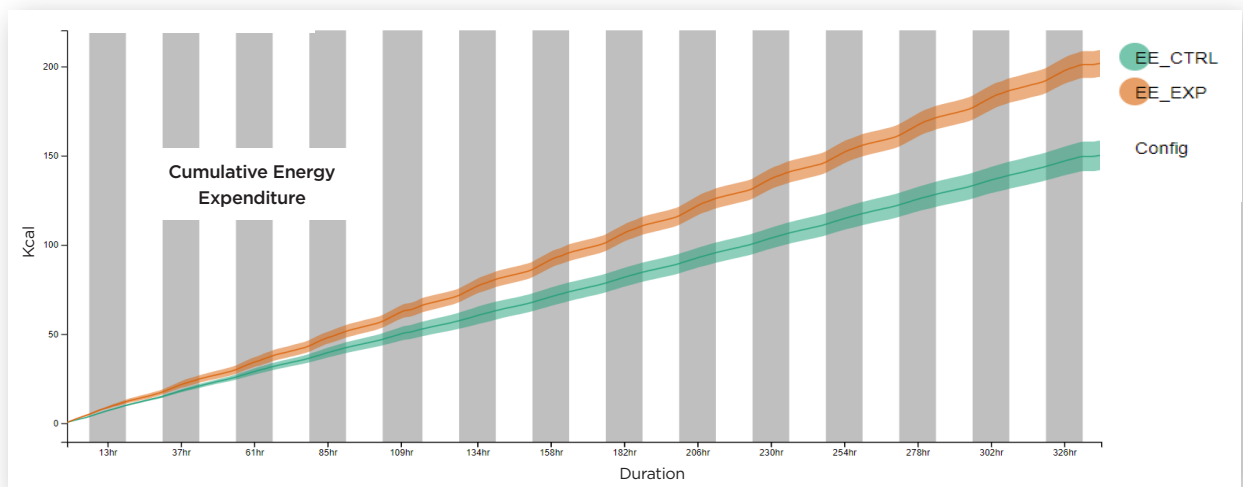
Circadian Highlighting:

Import RT Export SVG Export CSV Save



## Real-time Analysis of Live Data

Promethion Live makes the analysis and evaluation of complex metabolic data easy. Select individual animals and parameters to compare or define groups of animals for direct visualization of cohort-specific differences. Real-time recordings can be viewed while an experiment is in progress or downloaded directly as a .csv file once a recording is complete. Temporal resolution can also be adjusted maximizing flexibility with short and long-term studies. Patterns of activity that correlate with circadian cycles (i.e. lights on/off) are readily detectable with the gray and white columns in the graphical display. Editable templates and configurations allow for creating and saving specific reports for different user groups.

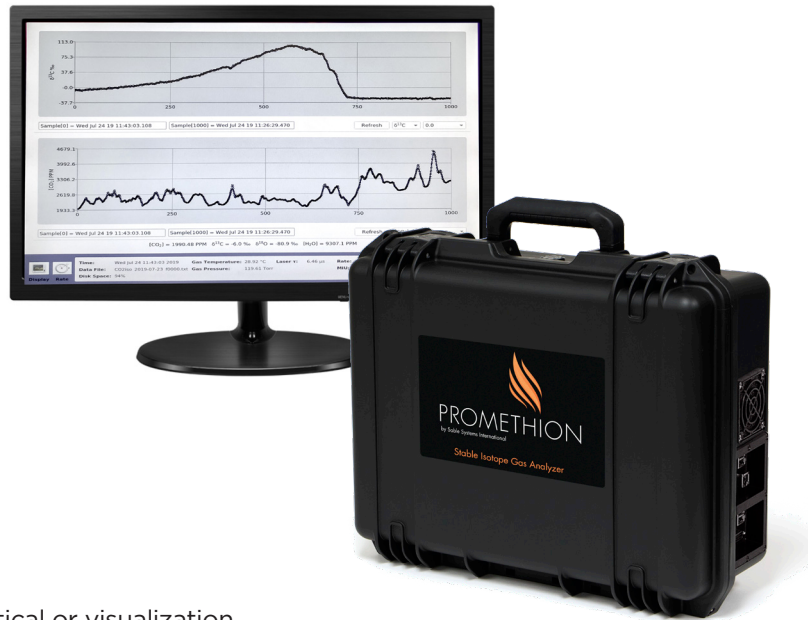


For scientific evaluation, animals can be grouped with the data displayed as mean or median and with standard deviation or standard error. Data can be binned in any interval and can be exported in CSV data or SVG (graphics) formats.

# Promethion Live Software Platform

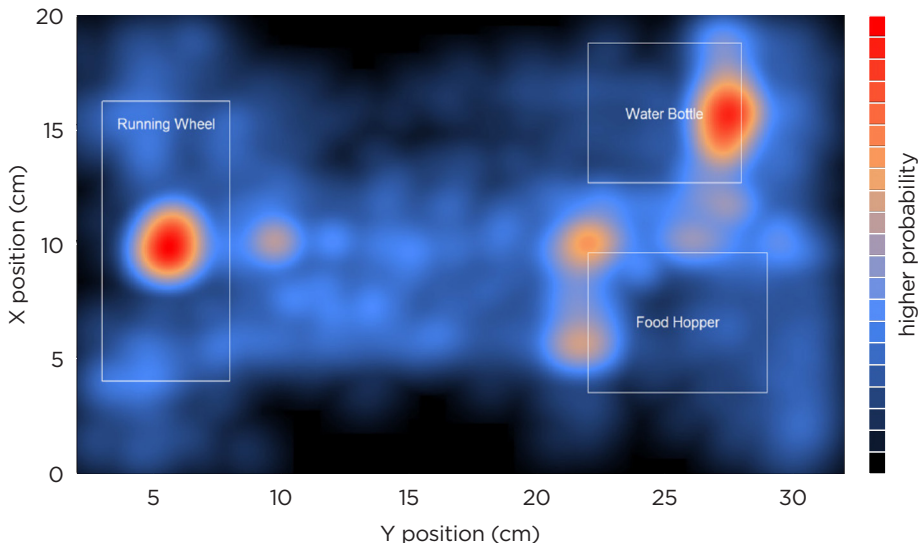
## High Content Metabolic Phenotyping

Promethion Live integrates multiparameter metabolic and behavioral phenotyping data for comprehensive evaluation. This includes data from our Stable Isotope Analyzer and our new Methane Analyzer. These high-resolution metabolic and behavioral data are synchronized with each other enabling correlative studies. For an even deeper understanding of the experiment, these data may also be synchronized with other analytical modalities such as telemetry-based body temperature measurements or continuous glucose monitoring measurements.



## Export Data

You can export your data in CSV format for statistical or visualization analysis by 3rd party software applications. The chart below was prepared using R (Copyright © 2020 The R Foundation for Statistical Computing). R scripts are available from Sable Customer Support.



Sable Systems International  
3840 N. Commerce Street  
North Las Vegas, NV 89032, USA  
TELEPHONE:  
US: +1 800 330 0465 / + 1 702 269 4445  
EMAIL: sales@sablesys.com

[www.sablesys.com](http://www.sablesys.com)



Sable Systems Europe GmbH  
Ostendstr. 25  
D-12459 Berlin, Germany  
TELEPHONE: +49 30 5304 1002  
FAX: +49 30 5304 1003  
EMAIL: sales@sablesys.eu