

CAB-8 and CAB-16 Environmental Control Cabinets

Environmental Control Cabinet with Integrated Promethion Core

The CAB-8 and CAB-16 provide environmental control for your Promethion Core rodent metabolism and behavioral system. These cabinets provide up to 100 user-defined changes in temperature and light intensity over the course of your study. Control and real time monitoring are available via the front-mounted 7" color touch screen display, allowing convenient device operation and information handling. The CAB-8 is a single door configuration for 8 mouse cages or 4 rat cages. The CAB-16 is two-door configuration for 16 mouse cages or 8 rat cages.

With GLP in mind, an event registry is created to record user access, door opening/closing, parameter



CAB-16 Environmental Control Cabinet
fully configured with 16 Promethion Core mouse cages



FEATURES

Temperature control, from 3° C to 50° C, with 0.1° C resolution

Automated light intensity (up to 400 LUX) and cycle management

Up to 100 user-defined changes in temperature and light intensity

Remote wireless monitoring and access

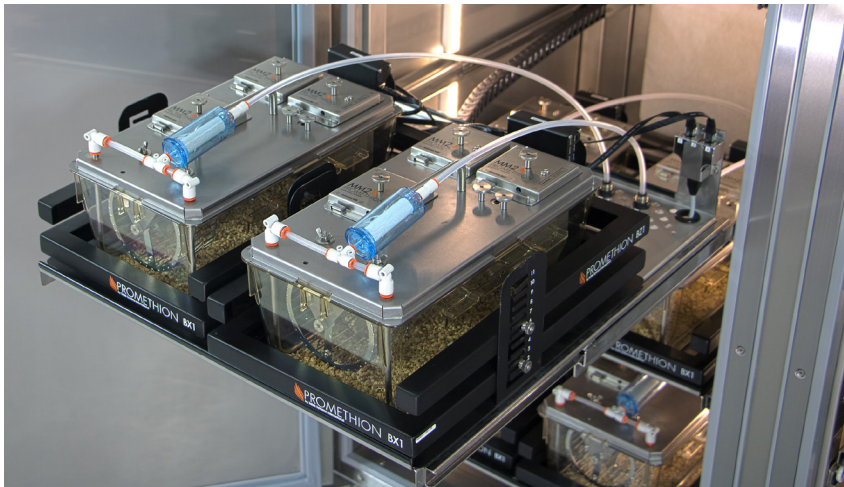
Touch screen digital controller with integrated data memory

Ergonomically designed and fully integrated with Promethion high throughput rodent phenotyping system, in a small footprint

variation, system errors and operator notes. User administration and pass protected login prevent unauthorized access. The system will alarm and provide email notification in event of error, assuring animal welfare compliance and adherence to the experimental design.

CAB-8 and CAB-16 Environmental Control Cabinets

The CAB-8 and CAB-16 with Promethion Core deliver unparalleled user convenience and performance in a small footprint. The Promethion ESA (Environmental Sensor Array) integrates temperature, light, humidity, barometric pressure and enclosure activity with metabolic and behavioral data. Real-time animal data are available from the web browser-based data management application and can be accessed securely via wired or wireless Ethernet from desktop or mobile devices.

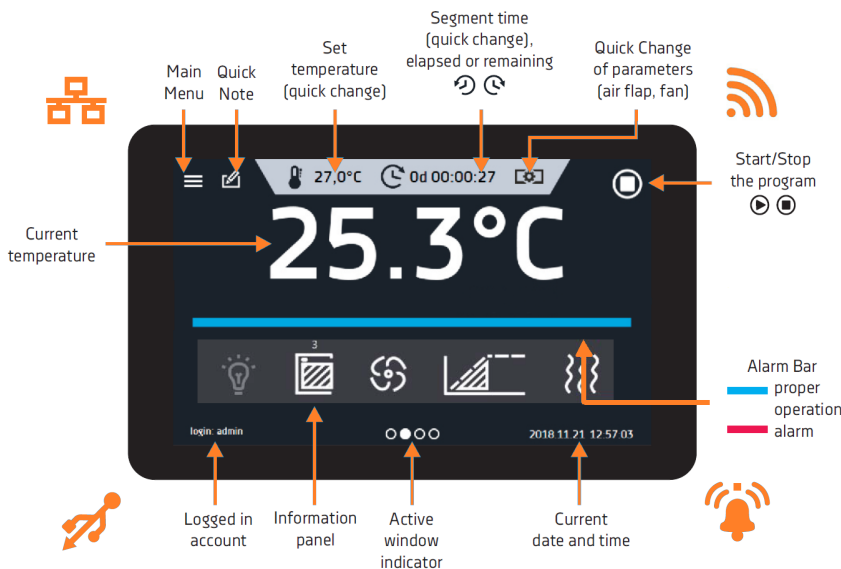


Pull-out stainless-steel shelves simplify cage access, increasing throughput, improving operator ergonomics and streamlining daily animal husbandry

SPECIFICATIONS

AIR CONVECTION	Forced
DISPLAY	7" full color touch screen
TEMPERATURE RANGE [°C]	+3 to +50
TEMPERATURE RESOLUTION EVERY [°C]	0.1
OVER/UNDER TEMPERATURE PROTECTION	Class 3.3, Din 12880
LIGHTING	LED strips
LIGHT CONTROL	0-100%, 400 lux max.
HOUSING	Acid-resistant stainless steel (DIN 1.4301) – brushed
INTERIOR	Acid-resistant stainless steel (DIN 1.4301) – brushed
CAB-8 DIMENSIONS	80.5 cm x 199 cm x 86 cm (W x H x D) Chamber Capacity: 499 L
CAB-16 DIMENSIONS	148 cm x 199 cm x 86 cm (W x H x D) Chamber Capacity: 1,239 L
DOOR TYPES	Solid stainless steel brushed door(s) standard; optional glass door(s) available upon request
WEIGHT	CAB-8: 115 kg; CAB-16: 185 kg
POWER REQUIREMENTS	2 options; 230V, 50Hz or 115V, 60Hz
INTERNAL AUXILIARY POWER SOCKET	115/230V

Promethion Core specifications available upon request



The Environmental Control Cabinet includes a 7" touch screen display



Sable Systems International
3840 N. Commerce Street
North Las Vegas, NV 89032, USA
TELEPHONE:
US: +1 800 330 0465 / + 1 702 269 4445
EMAIL: sales@sablesys.com

www.sablesys.com



Sable Systems Europe GmbH
Ostendstr. 25
D-12459 Berlin, Germany
TELEPHONE: +49 30 5304 1002
FAX: +49 30 5304 1003