

OXZILLA

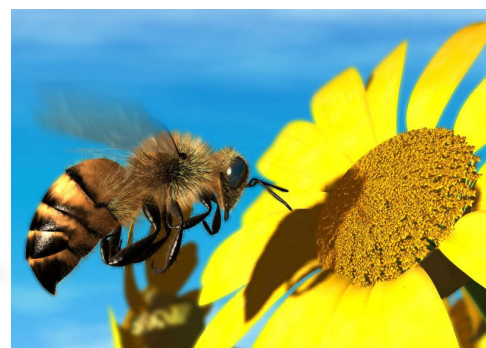
A Superior Resolution, Dual-Channel, Differential Oxygen Analyzer



The OXZILLA Differential Oxygen Analyzer



The OXZILLA dual-channel, differential oxygen analyzer is designed to detect even the smallest oxygen concentration changes between gas streams. Capable of measuring oxygen consumption from small insects, the OXZILLA is the most sensitive, highest resolution analyzer in the Sable product line.



Dual Channel, Differential Analyzer

With two distinct sensors, the OXZILLA can simultaneously monitor incurrent and excurrent oxygen concentrations, eliminating error from incurrent oxygen concentration variability.

Digital, 4-line alphanumeric display

The OXZILLA has a display and control knobs that allow the user to span, calibrate, and change multiple settings at the analyzer. No external software is required.

Barometric Pressure Compensation

Standard in our analyzers, barometric pressure compensation eliminates errors caused by ambient pressure variation.

Internal Temperature Control

Internal cabinet temperature control minimizes error resulting from thermal drift, increasing ultimate sensitivity.

Lifetime Technical Support

Our technical support team will help you overcome any challenges you may face with equipment setup as well as provide advice and assistance on future applications.

Optional Configurations:

Rack Mount: A rack mount configuration is available for standard 19 inch racks.

Connectors: A variety of external gas connectors and fittings are available to meet your needs. Call for more information.

Stainless Steel Tubing: Internal stainless steel tubing is available for high temperature or low flow rate applications.

Specifications:

Sensor Type: Fuel cell (dual-channel)

Range: 0-100% O₂

Accuracy: O₂: 0.1% typical 2-100%

Resolution: up to 0.0001%O₂

Drift: < 0.01%O₂/hr (At constant temperature with constant air flow at 50 mL/min)

Weight: 14lbs/2.8kg (24lbs/11kg with packaging)

Dimensions: W: 19in/48cm, H: 9in/23cm, D: 16in/41cm

Power Requirements: 12-15 VDC nominal, 100-4,500mA consumption; universal AC adapter supplied

Flow Rate: 5-2,000mL/min per channel(10-500mL/min recommended)

Analog Outputs: Multiple range 0-5V BNCs for channel 1 O₂, channel 2 O₂, ΔO₂, barometric pressure, and ground reference

Digital Outputs: RS-232 (serial)

Operating Conditions: 0-50 °C, non-condensing

Fuel-Cell Life: 1-2 years in normoxia, typical

Cell Temperature Accuracy: 0.2 °C typical (0-60 °C)

Temperature Resolution: 0.001 °C

Barometric Pressure Accuracy: 0.1% of reading

Barometric Pressure Resolution: 0.0001kPa

Contact Sable Systems.

We encourage you to discuss your application with us.

Phone: 800-330-0465 (toll-free) / 702-269-4445

Fax: 702-269-4446.

On the Web: www.sablesys.com

Email Us: mail@sablesys.com.